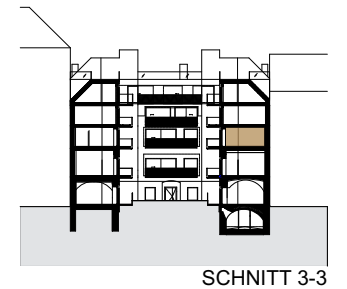
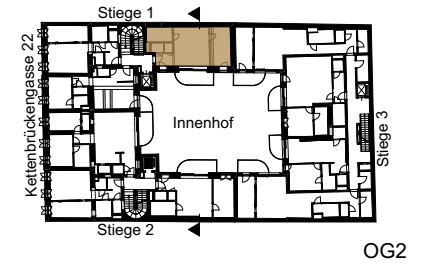
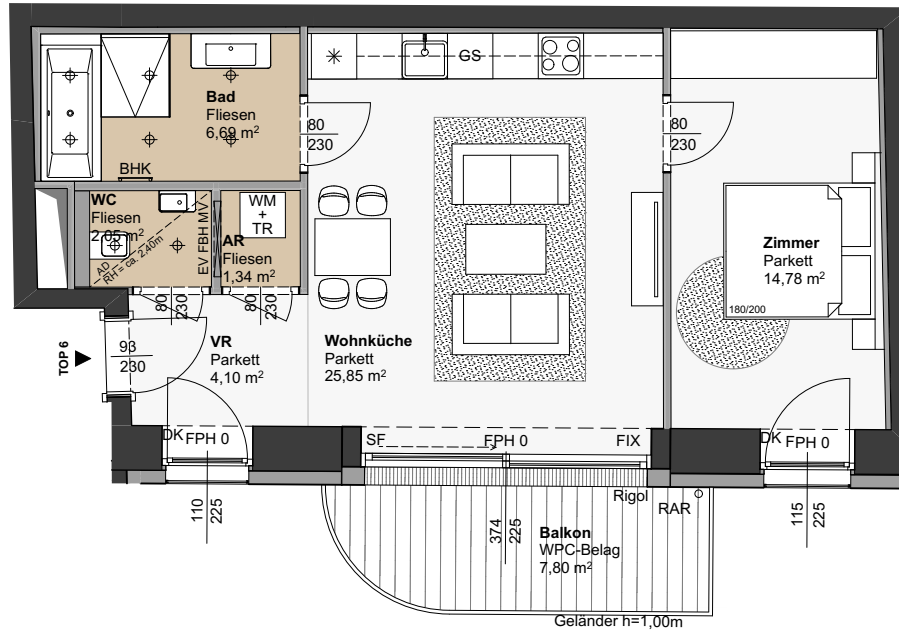


VORABZUG

THE FUSION

KETTENBRÜCKENGASSE 22
WIEN IV



TOP 6 Stiege 1

2. OBERGESCHOSS 2 Zimmer

Wohnnutzfläche ca. 54,81 m²

Balkon ca. 7,80 m²
Einlagerungsraum ca. 2,80 m²
Raumhöhe ca. 252 cm